

Even molding beginners can easily set the conditions! Molding condition input support function

Molding navigation function - Parameter input support

Concept

- Set the minimum settings necessary for molding sequentially using the navigation method according to the basics.
- Even those who are new to TOYO machines and those with experience can check the basics of setting conditions.

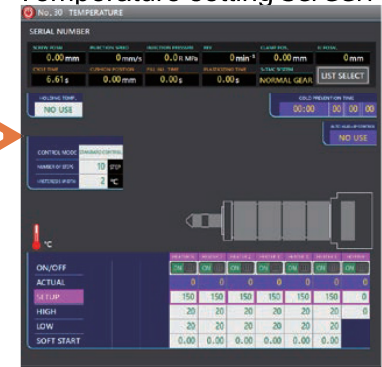
Features

- In order to make it easy for beginners to understand, by highlighting the input required parts or selecting the HELP function, the explanation content can be displayed and works as the support for inputting appropriate conditions.

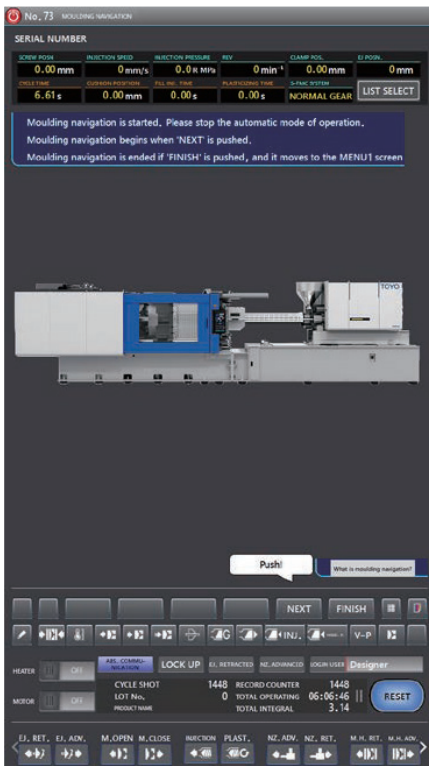
Mold clamping force/injection stroke calculation screen



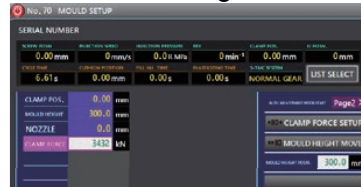
Temperature setting screen



Molding navigation startup screen



Mold exchange screen

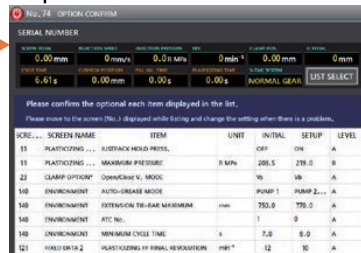


Areas that require input are displayed in pink.

Injection/plasticization setting screen

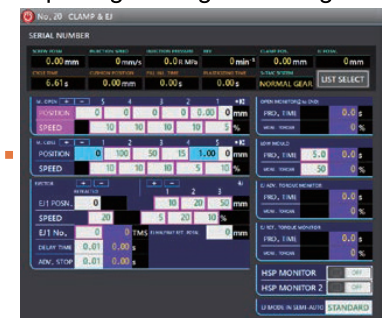


Option confirmation screen



The setting change history is displayed for each item, allowing you to check the current setting status.

Mold opening/closing/EJ setting screen



Molding navigation finished

