

Elimination of unstable elements of check-ring Unique measuring system that prevents resin backflow

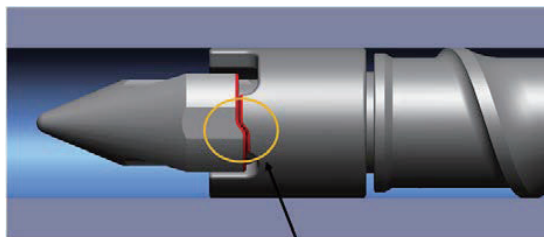
SRC-III (Super Resin Control)

Concept

- By mechanically in active the check ring, unstable factors (difference in closing time) during injection can be eliminated.
- By preventing resin backflow during check-ring in active, repeatability of filling amount and filling pressure during continuous molding is improved.

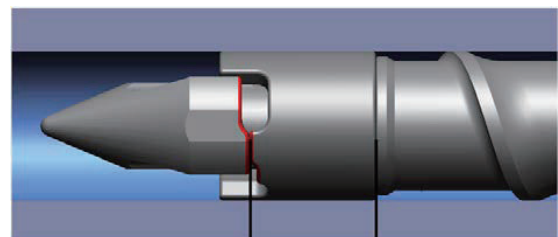


During measuring



Locking mechanism

After measuring with SRC-III



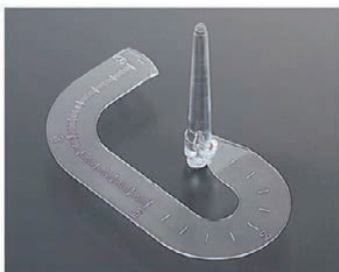
Hold the ring position by the straight area of ring-head (locked state).

Features

- After the resin metering operation is complete, the screw rotates slightly in the opposite direction, which activates the locking mechanism and eliminates any instability.
- By adding an operation program and changing to 3 check parts specifically for SRC-III, it can be installed on standard machines as well.

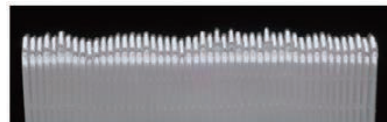
Advantage

- Compare the stabilization of measured density using flow length by injecting with a constant stroke without holding pressure control.

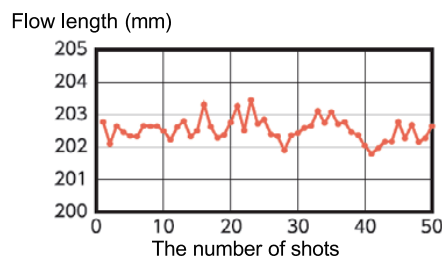


[Molding: Bar-flow, Resin: GP-PS]

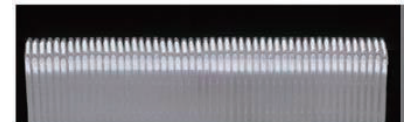
Conventional measuring method



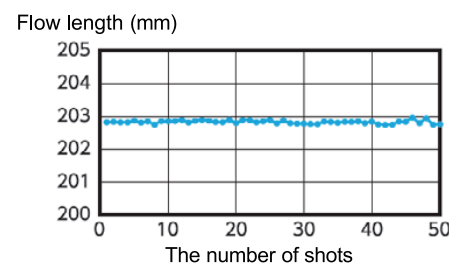
$\bar{X}=202.5\text{mm}$ $R=1.67\text{mm}$
 $\sigma=0.3496\text{mm}$ $R/\bar{X}=0.825\%$



SRC-III measuring method



$\bar{X}=202.8\text{mm}$ $R=0.21\text{mm}$
 $\sigma=0.0511\text{mm}$ $R/\bar{X}=0.104\%$



TOYO
MACHINERY & METAL